



ComProbe 802.11 Firmware Update for CPAS version 15.11.8698.9035

Firmware Update

To take full advantage of the improvements to the ComProbe 802.11 with ComProbe Protocol Analysis System you must update the firmware on the ComProbe.



Note: With the release of ComProbe Protocol Analysis System (CPAS) version 15.11.8698.9035 in December 2015, an update to the firmware is required upon installation of the software. For that version, the full update requires three complete passes through the update process followed by a power cycle of the ComProbe 802.11. Subsequent firmware updates may not require three firmware update cycles. This procedure is designed to take you through one to three firmware update cycles. Follow the procedure carefully, paying attention to jumps around unnecessary steps, and you should have no difficulty updating the firmware.

1. This tab displays the current firmware version in the hardware. You can check for the firmware updates by first noting the current version and then clicking on the **Check For Updates** button.

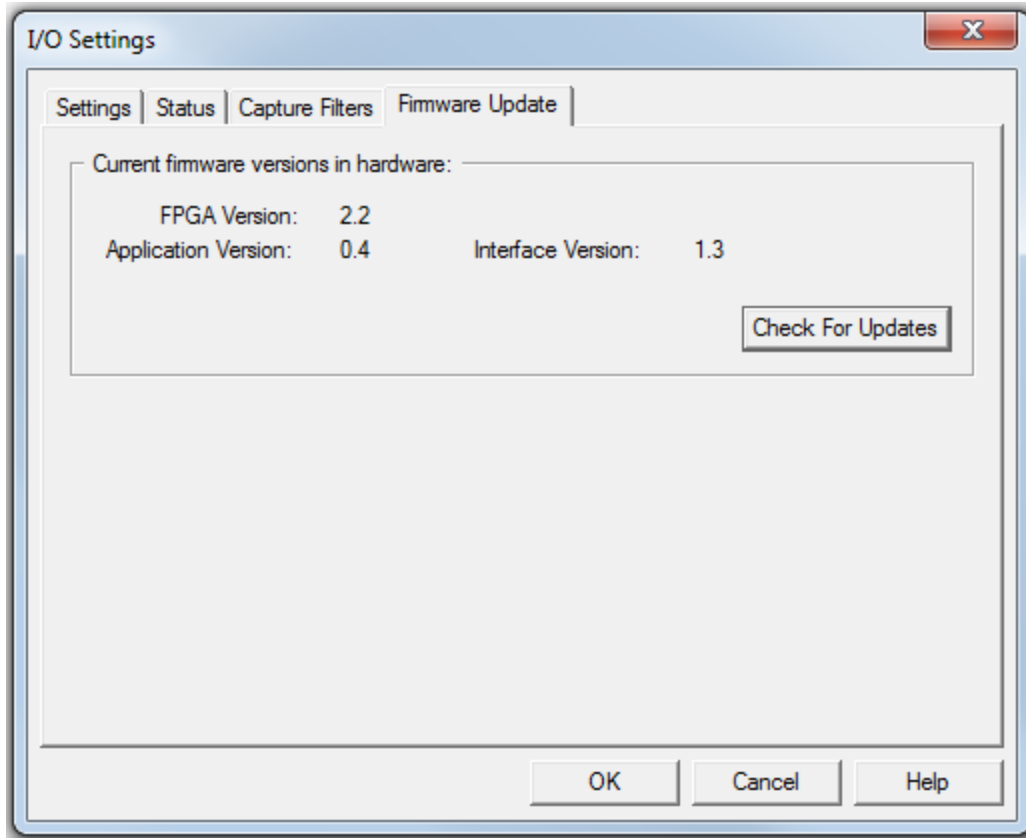


Figure 1 - 802.11 I/O Settings Firmware Update Tab

2. The **Check for Updates** dialog will open. If an update is available you can install it by clicking on the **Start Update** button.



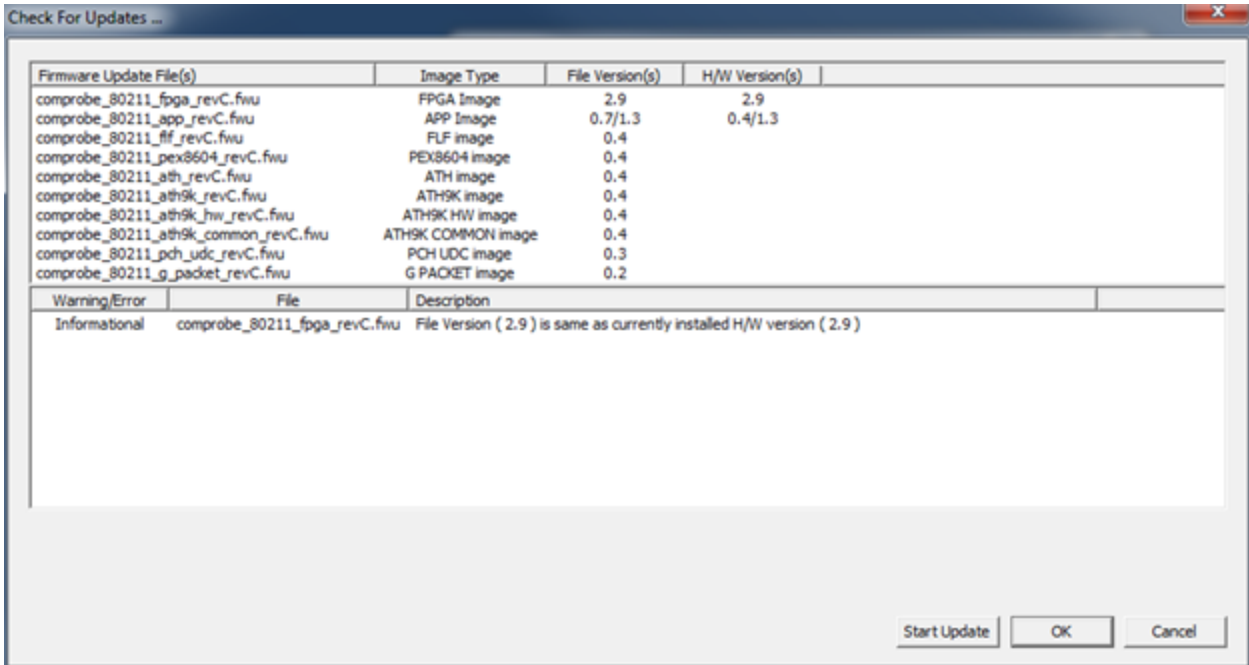


Figure 2 - 802.11 I/O Settings Firmware Check For Updates

3. When the update is complete, two situations can occur.
 - a. If more firmware updates are required the following dialog will appear. Click on OK, and continue to step 4.

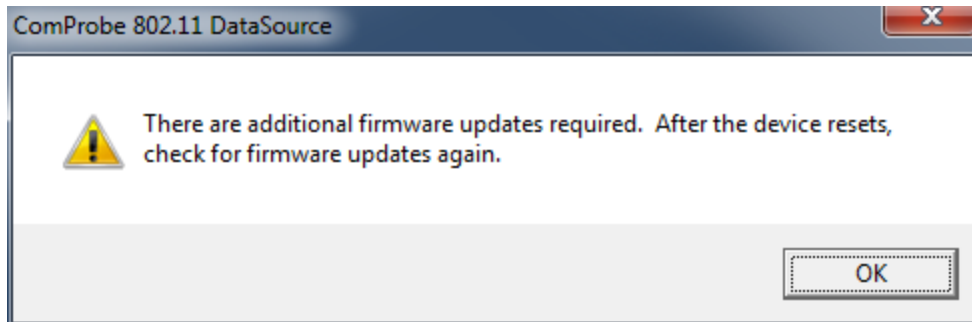


Figure 3 - 802.11 I/O Settings Check for Updates Again, second cycle.

- b. If there are no more firmware updates, continue to step 15.
4. Click **OK** on the **Check for Updates** dialog.
5. Click **Cancel** on the **I/O Settings** dialog **Settings** tab . The ComProbe 802.11 will reset. Wait for a solid **Activity** LED on the ComProbe hardware .
6. Once the ComProbe 802.11 has reset, select **I/O Settings** from the Control Window **Options** menu.
7. Click on the **I/O Settings** dialog **Firmware Update** tab and then click on the **Check for Updates** button. The Check for Updates dialog will appear.



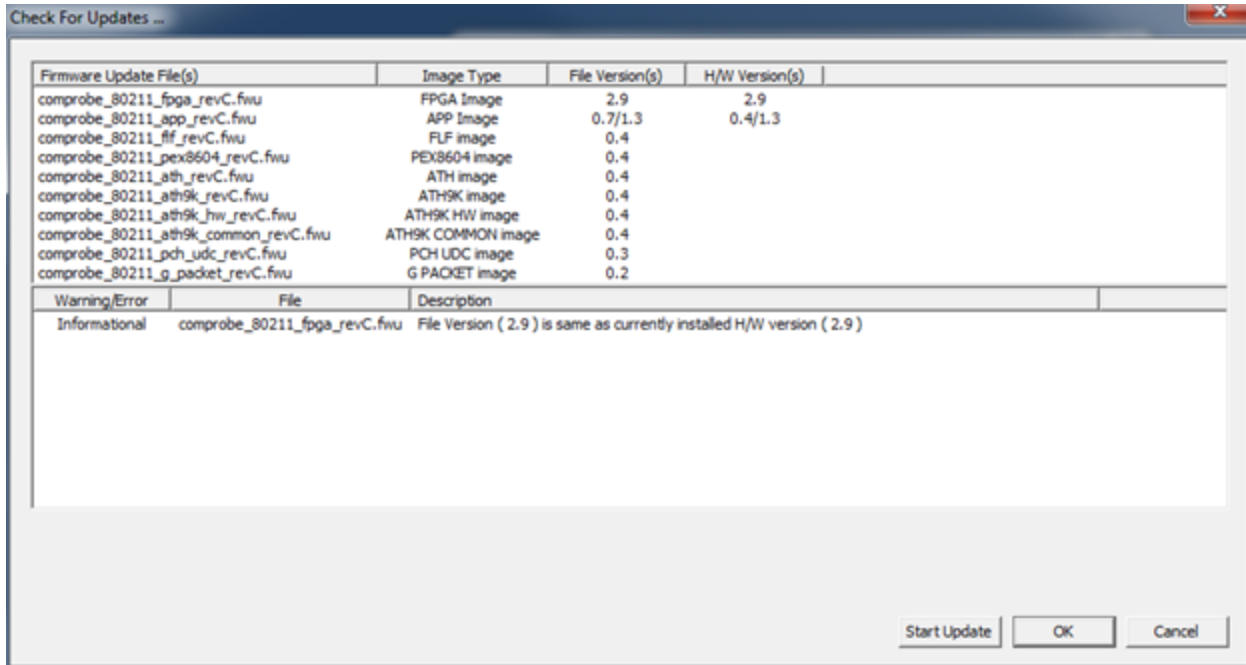


Figure 4 - 802.11 I/O Settings Firmware Check For Updates, second cycle.

8. Click the **Start Update** button.
9. Again, when the update is complete, two situations can occur.
 - a. If there are more firmware updates the following dialog will be displayed. Click on **OK** and continue to step 10.

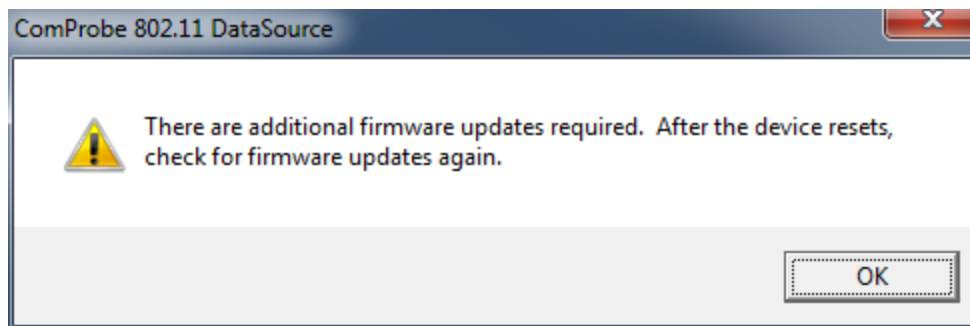


Figure 5 - 802.11 I/O Settings Check for Updates Again, third cycle.

- b. If there are no more firmware updates, continue to step 15.
10. Click **OK** on the **Check for Updates** dialog.
11. Click **Cancel** on the **I/O Settings** dialog **Settings** tab. The ComProbe 802.11 will reset. Wait for a solid **Activity** LED on the ComProbe hardware .
12. Once the ComProbe 802.11 has reset, select **I/O Settings** from the Control Window **Options** menu.
13. Click on the **I/O Settings** dialog **Firmware Update** tab and then click on the **Check for Updates** button. The **Check for Updates** dialog will appear again.



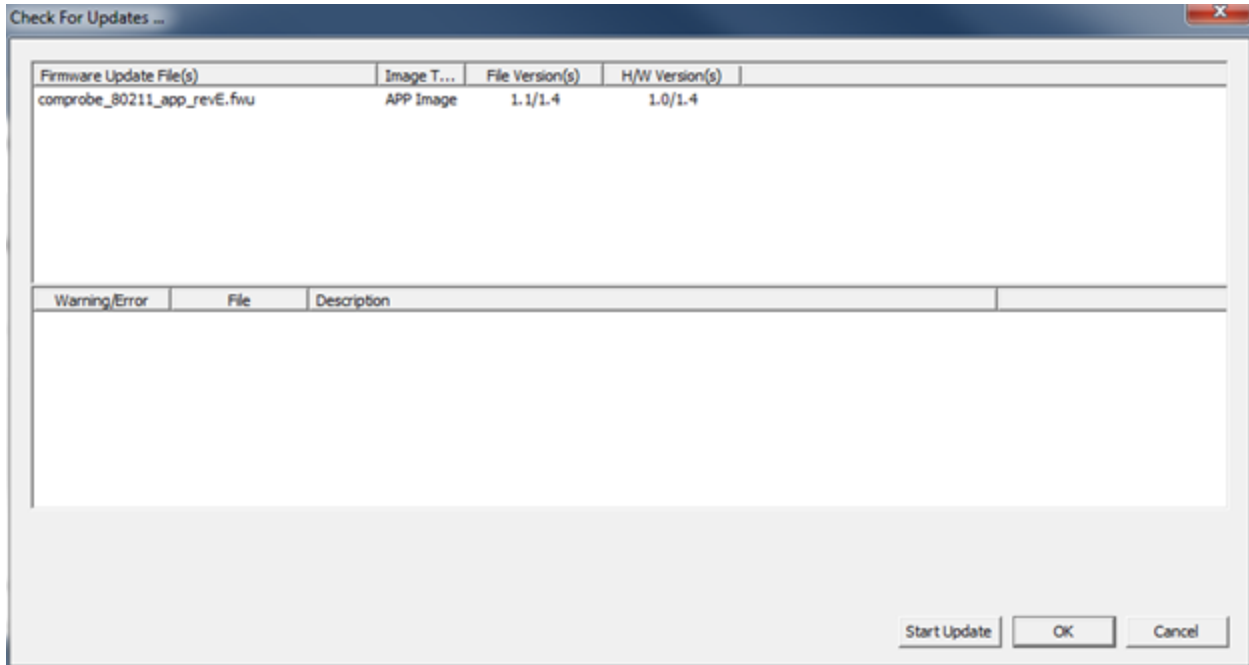


Figure 6 - 802.11 I/O Settings Firmware Check For Updates, third cycle.

14. Click the **Start Update** button.
15. When the update is complete the **OK** button will be enabled. Click the **OK** button.
16. When the **I/O Settings** dialog appears, click the **OK** button. The ComProbe 802.11 will reset. Reset is complete when the ComProbe 802.11 unit serial number appears in the Control Window Configuration Information.

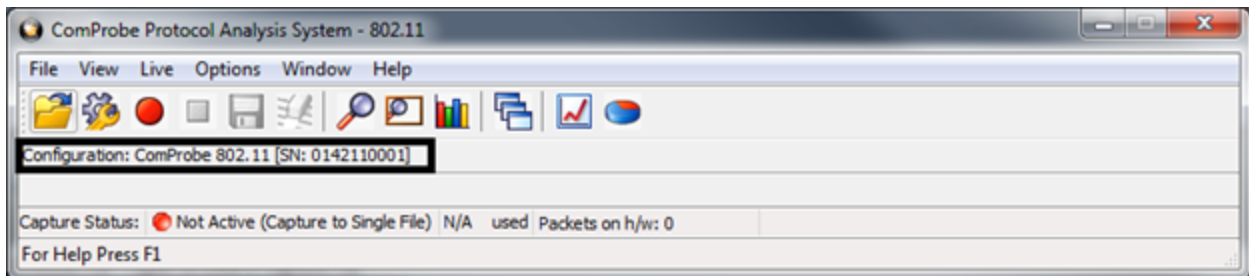


Figure 7 - ComProbe 802.11 Unit Reset Complete Indication

17. Remove power from the ComProbe 802.11 unit, and then reapply power. Wait until the **Activity** LED comes back on and resume normal ComProbe operation. When the ComProbe 802.11 serial number shows in the Control Window again, the firmware update is complete.

Technical Support

Technical support is available in several ways. The online help system provides answers to many user related questions. Frontline's website has documentation on common problems, as well as software upgrades and utilities to use with our products.

Web: <http://www.fte.com>, click Support



Email: tech_support@fte.com

If you need to talk to a technical support representative, support is available between 9am and 5pm, U.S. Eastern time, Monday through Friday. Technical support is not available on U.S. national holidays.

Phone: +1 (434) 984-4500

Fax: +1 (434) 984-4505

Copyright 2016 Frontline Test Equipment, Inc.

Author: Sean Clinchy

Publish Date: 12 January 2016

